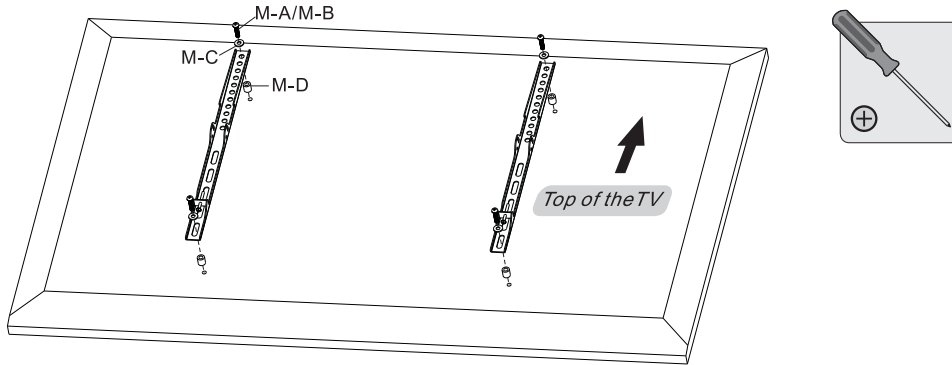


## 2. Installing the Adapter Brackets

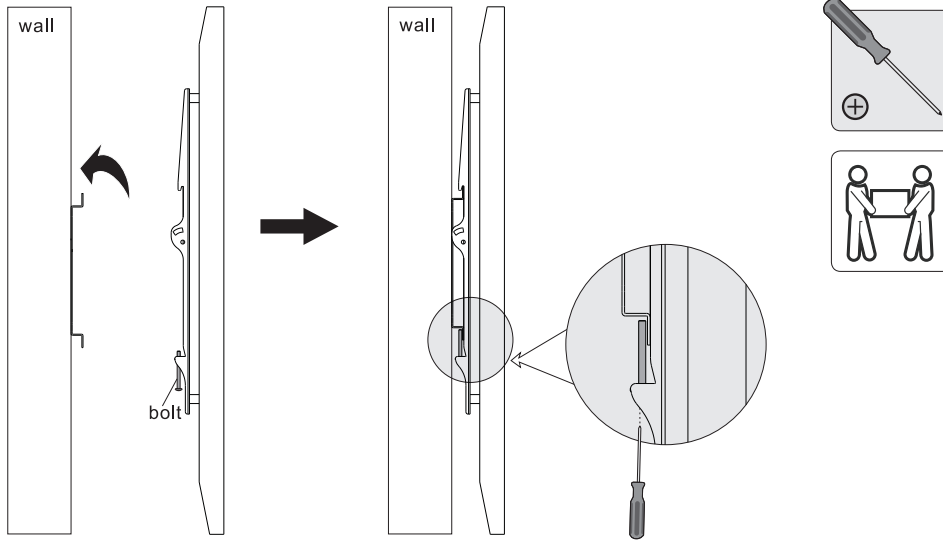


**Note:** Choose the appropriate screws, washers and spacers (if necessary) according to the type of screen.

- Position the adapter brackets as close as possible to the center of the TV.
- Screw the adapter brackets onto the TV.

**Tighten all screws but do not over tighten.**

## 3. Hanging the TV onto the Wall Plate

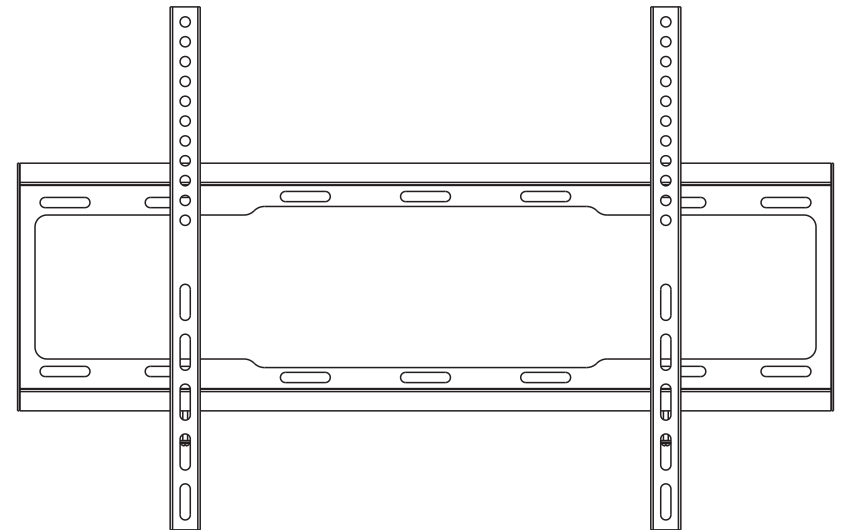


Tighten the bottom bolts to secure the adapter brackets to the wall plate.

### Maintenance

- Check that the bracket is secure and safe to use at regular intervals (at least every three months).
- Please contact your dealer if you have any questions.

# Fixed Wall Mount



**CAUTION: DO NOT EXCEED RATED LISTED WEIGHT CAPACITY. SERIOUS INJURY OR PROPERTY DAMAGE MAY OCCUR!**

MT-333-BK



200x200/300x300  
400x200/400x400  
600x400



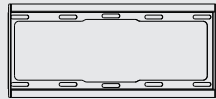
**NOTE:** Read the entire instruction manual before you start installation and assembly.

## ⚠ WARNING

- This mounting bracket was designed to be installed and utilised **ONLY** as specified in this manual. Improper installation of this product may cause damage or serious injury.
- This product should only be installed by someone with good mechanical ability who has basic building experience and fully understands this manual.
- Make sure that the supporting surface will safely support the combined weight of the equipment and all attached hardware and components.
- If mounting to wood wall studs, make sure that mounting screws are anchored into the center of the studs. The use of a stud finder is highly recommended.
- Always use an assistant or mechanical lifting equipment to safely lift and position the equipment.
- Tighten screws firmly, but do not over tighten. Over tightening can cause damage to the items, This greatly reduces their holding power.
- This product is intended for indoor use only. Using this product outdoors could lead to product failure and personal injury.

## Component Checklist

**IMPORTANT:** Ensure that you have received all parts according to the component checklist prior to installation. If any parts are missing or faulty, telephone your local distributor for a replacement.



wall plate (x1)  
A



adapter bracket (x2)  
B



bubble level (x1)  
C

### Package M



M6x30 (x4)  
M-A



M8x30 (x4)  
M-B

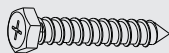


D8 washer (x4)  
M-C

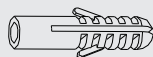


big spacer (x4)  
M-D

### Package W



ST6.3x55 (x4)  
W-A

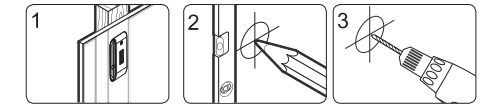
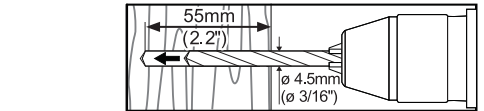
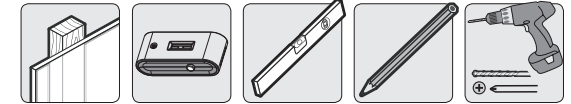
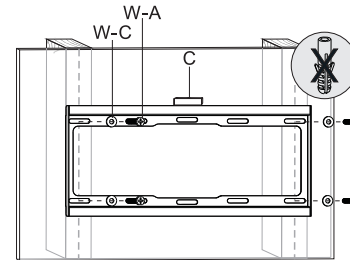
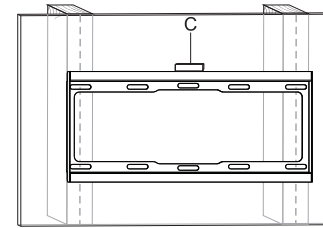


concrete anchor (x4)  
W-B



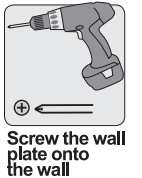
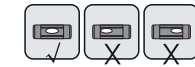
D6 washer (x4)  
W-C

## 1a. For Wood Stud Wall Mounting



1 Find and mark the exact location of mounting holes

2 Drill pilot holes

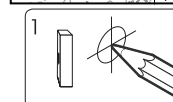
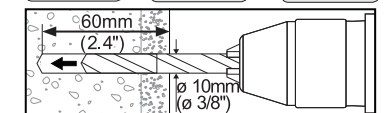
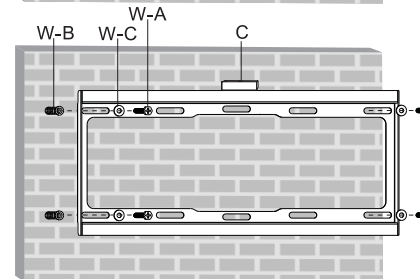
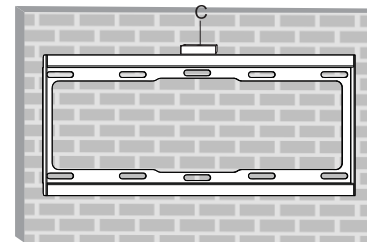


3 Screw the wall plate onto the wall

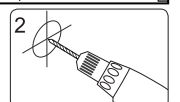
## ⚠ WARNING

- Make sure that mounting screws are anchored into the center of the studs. The use of a stud finder is highly recommended.
- Installers are responsible to provide hardware for other types of mounting situations.
- Installers must verify that the supporting surface will safely support the combined weight of the equipment and all attached hardware and components.

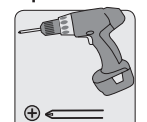
## 1b. For Solid Brick and Concrete Mounting



1 Mark the exact location of mounting holes



2 Drill pilot holes



3 Screw the wall plate onto the wall

## ⚠ WARNING

Installers must verify that the supporting surface will safely support the combined weight of the equipment and all attached hardware and components.