



Swivel & Tilt Outdoor TV Enclosure - Fits Sizes 43 to 65 inches - Maximum VESA 600x400

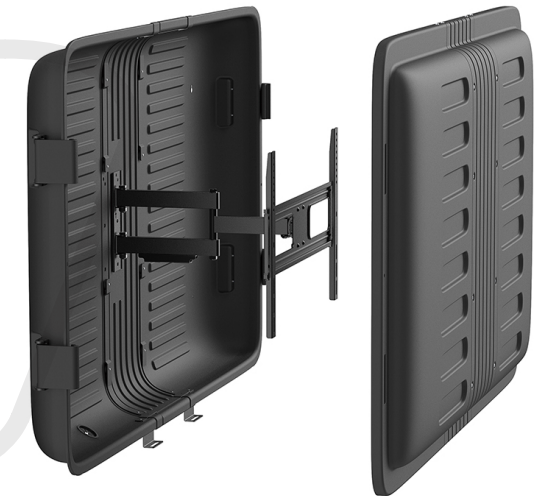
MT-790-BK - Specifications

Description

This swivel and tilting outdoor TV enclosure is designed to hold most 43 inch to 65 inch flat screen displays with a maximum VESA hole pattern of 600x400. It offers up to a +10° to -20° tilt and +90° to -90° swivel. This protective enclosure offers effective rain, wind, UV and vandal resistance, preventing the TV from any damage. Included is a full-motion mount for optimized viewing angles.

Physical Characteristics

Mounting Style	Tilting & Swivel Wall Mount			
Color	Black			
Material	Steel, Plastic			
Dimensions	1640 x 1020 x 205mm [64.6 x 40.2 x 8.1 inches]			
Mounting Pattern	VESA 200x200,300x200,400x200,300x300,400x300,400x400,600x400			
Metal Sheet Thickness	Wall Plate Thickness = 2.5mm cold-rolled sheet [0.098in] / VESA Panel Thickness = 2mm cold-rolled sheet [0.079in] / Bracket Arm Thickness = 2mm cold-rolled sheet [0.079in]			
Pipe Size	40 x 20 x 1.5mm Square Steel Tube [1.6 x 0.79 x 0.059 inches]			
Screen Size	43 - 65 inches [109 - 165cm]			
Weight Capacity	110 lbs [50kg]			
Tilt	+10° ~ -20°			
Swivel	+90° ~ -90°			
Profile	2.4 - 18.6 inches [60 - 473mm]			
Level Adjustment	-3° ~ +3°			
Screen Freely Tilting	Yes			
Panel Type	Detachable Panel			
Wall Plate Type	Fixed Wall Plate			
Direction Indicator	Yes			
Cable Management	Yes			
Anti-Theft	Yes			
Installation	Single Stud, Solid Wall			



Approvals

RoHS	Yes
Reach	Yes

Packaging Information

Package Quantity	1				
Mounting Hardware	4 - M5x14 Screws	4 - M6x14 Screws	4 - M6x30 Screws	4 - M8x30 Screws	4 - M8x50 Screws
	4 - Rectangular Washers	8 - Small Spacers	8 - Big Spacers	8 - ST6.3x55 Screws	4 - ST3.5x50 Screws
	8 - Concrete Anchors	4 - Anchors	4 - D6 Washers	4 - D5 Washers	
Product Weight	49lbs [22.2kg]				