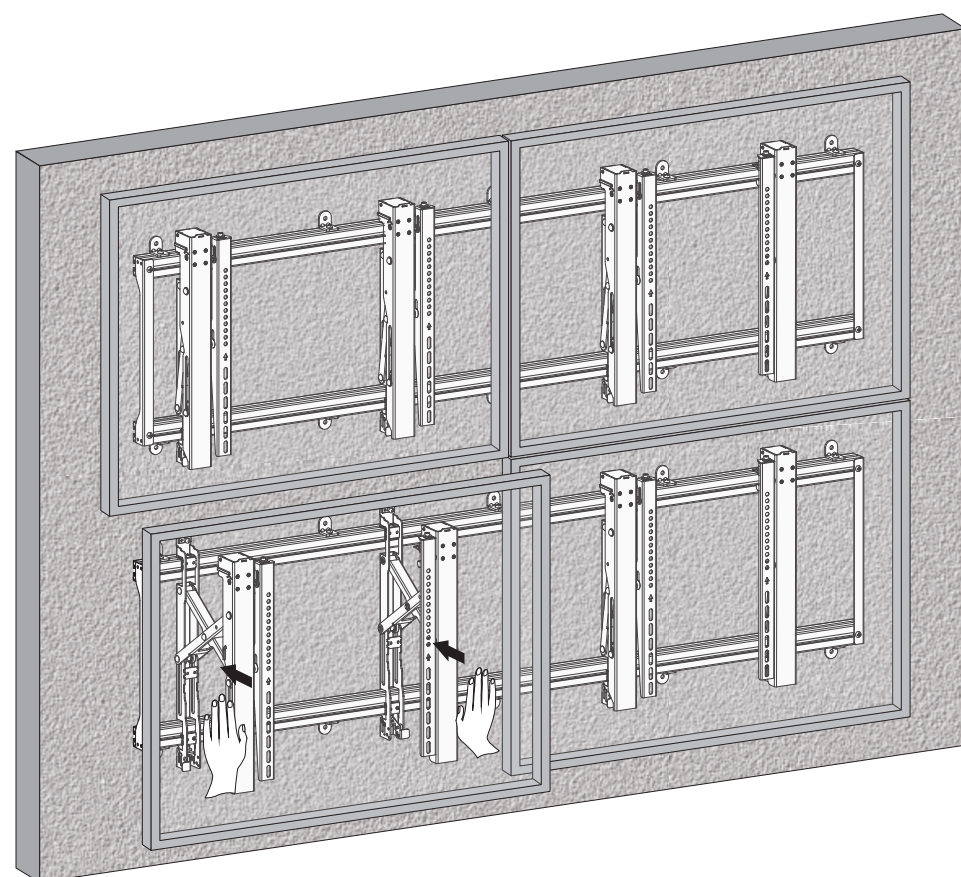
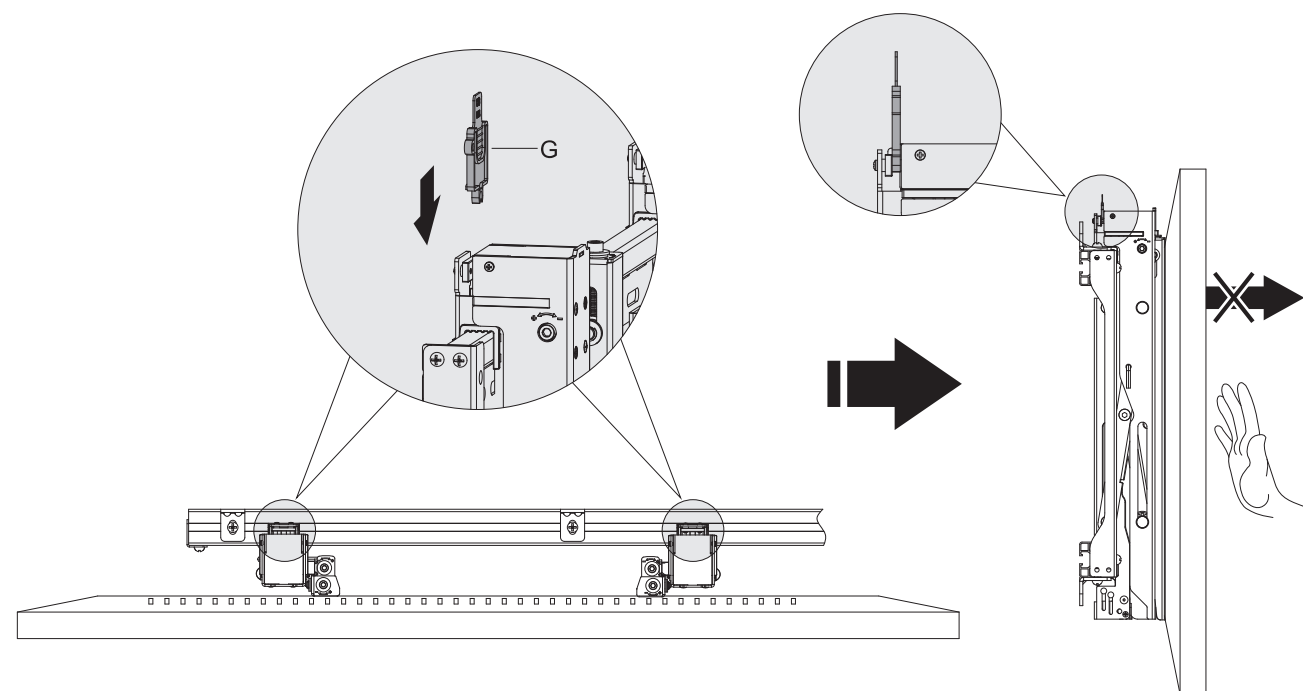


9. Lock the Pop-out Module with the Plastic Locking Pieces



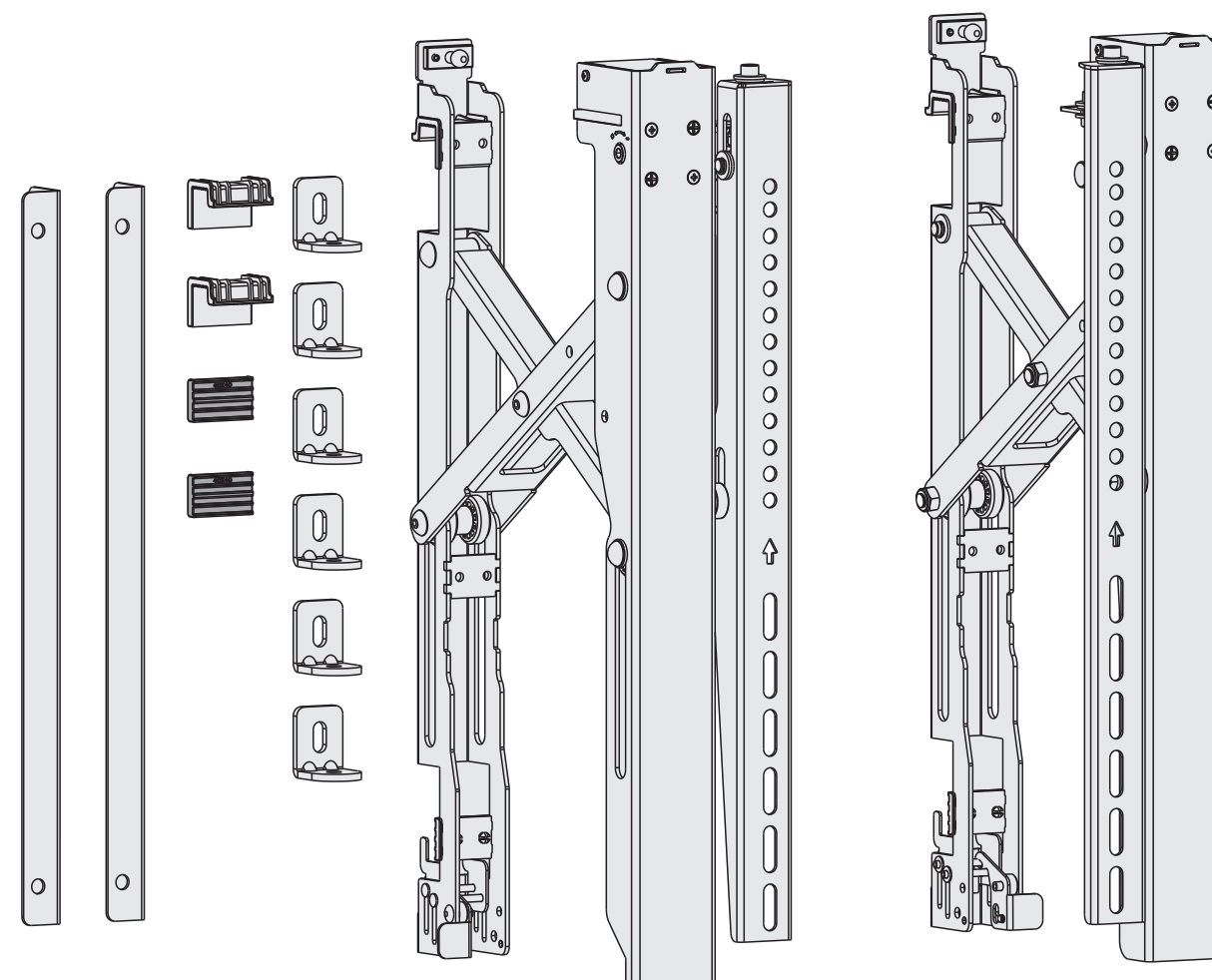
Maintenance

- Check that the bracket is secure and safe to use at regular intervals(at least every three months).
- Please contact your distributor if you have any questions.

Video Wall Mount



CAUTION: DO NOT EXCEED RATED LISTED WEIGHT. SERIOUS INJURY OR PROPERTY DAMAGE MAY OCCUR!



INSTALLATION MANUAL

MT-1514



200x200/300x200
300x300/400x200
400x300/400x400
600x400/800x400
1000x400



70kg/154lbs

NOTE: Read the entire instruction manual before you start installation and assembly.

⚠ WARNING

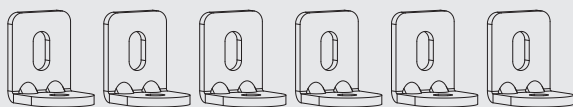
- Do not begin the installation until you have read and understood all the instructions and warnings contained in this installation sheet. If you have any questions regarding any of the instructions or warnings, please contact your local distributor.
- This mounting bracket was designed to be installed and utilised **ONLY** as specified in this manual. Improper installation of this product may cause damage or serious injury.
- This product should only be installed by someone with good mechanical ability who has basic building experience and fully understands this manual.
- Make sure that the supporting surface will safely support the combined weight of the equipment and all attached hardware and components.
- Always use an assistant or mechanical lifting equipment to safely lift and position the equipment.
- Tighten screws firmly, but do not over tighten. Over tightening can cause damage to the items, This greatly reduces their holding power.
- This product is intended for indoor use only. Using this product outdoors could lead to product failure and personal injury.

Required for Installation

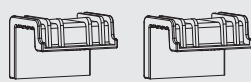


Component Checklist

IMPORTANT: Ensure that you have received all parts according to the component checklist prior to installation. If any parts are missing or faulty, telephone your local distributor for a replacement.



L-shaped connecting plates (x6)
A

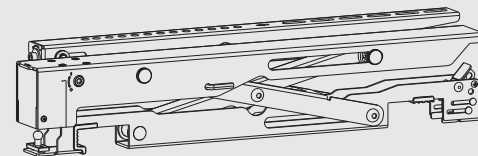


40x40
protective components (x2)
B

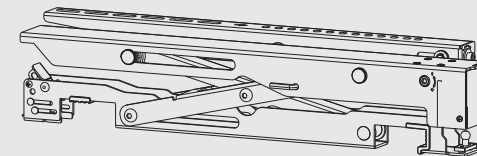


40x40
protective components (x2)
C

Component Checklist



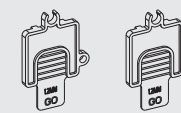
left pop-out adapter bracket
D



right pop-out adapter bracket
E

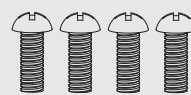


connecting plate
F

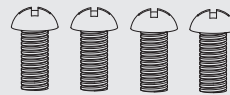


plastic locking piece
G

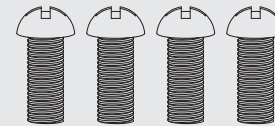
Package M



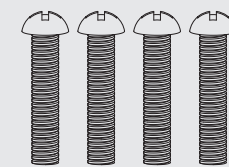
M5x14
M-A



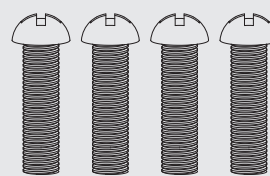
M6x14
M-B



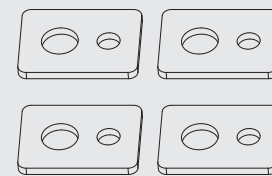
M8x20
M-C



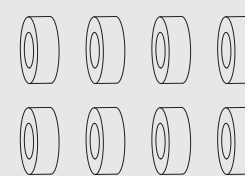
M6x30
M-D



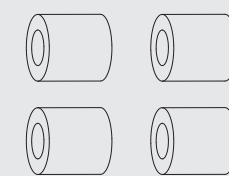
M8x30
M-E



washer
M-F

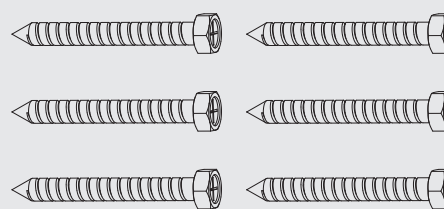


small spacer
M-G

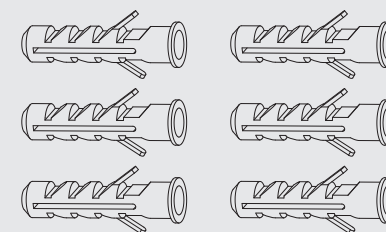


big spacer
M-H

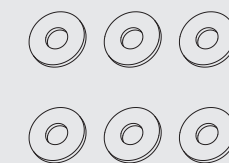
Package W



ST6.3x55
W-A

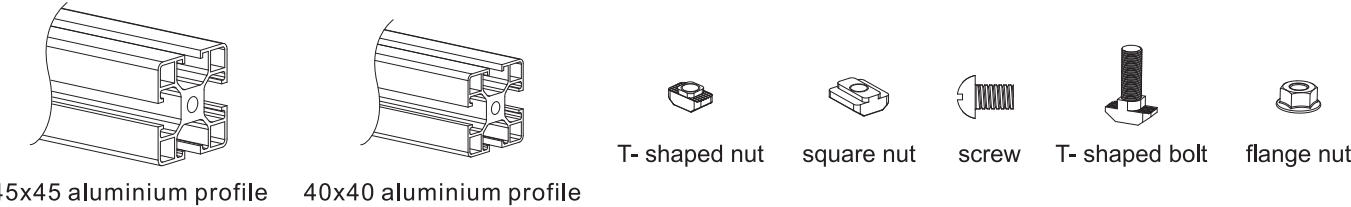


concrete anchor
W-B



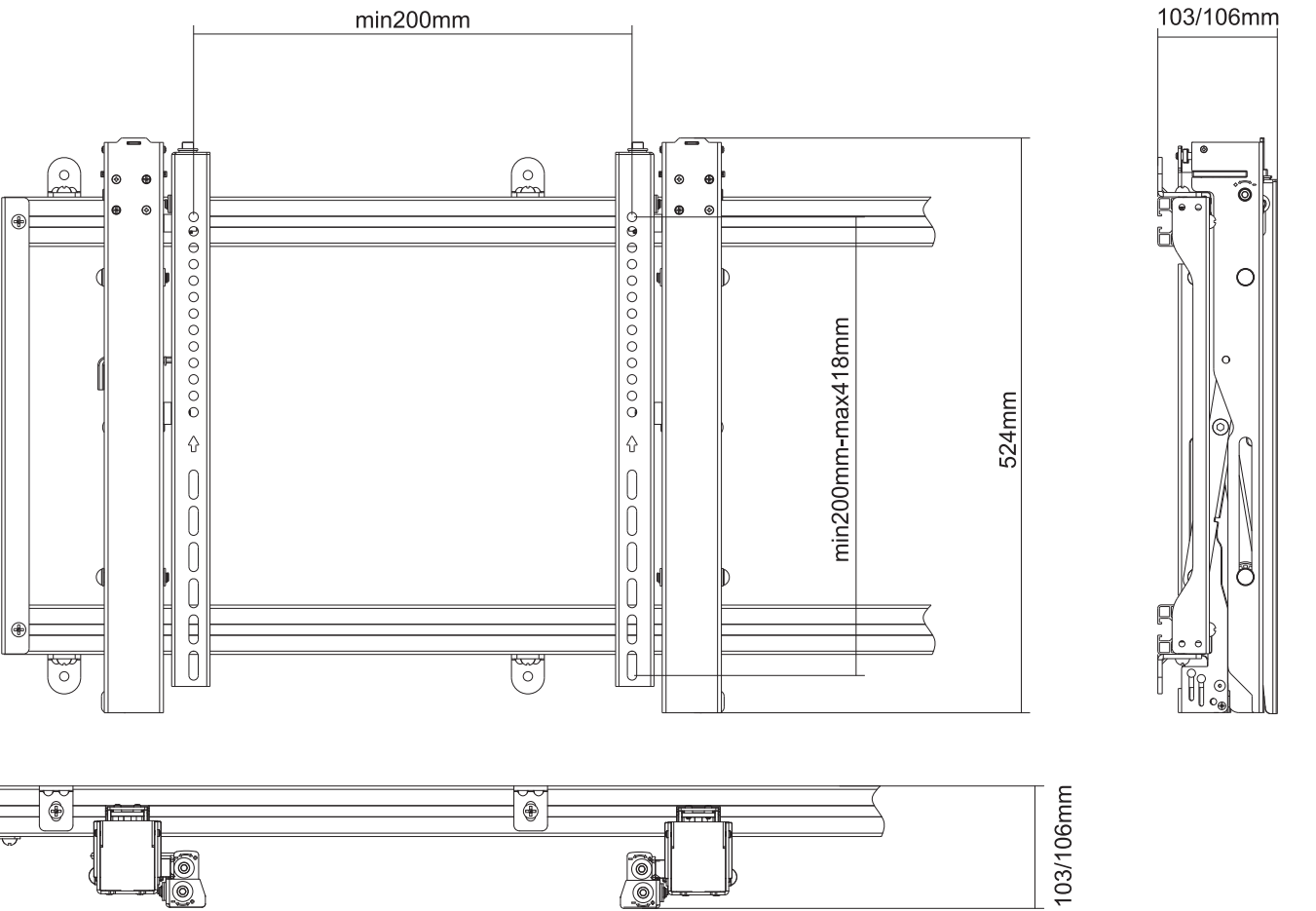
D6 washer
W-C

1. Aluminium profiles , Nuts and Screws are not included with Component Checklists.

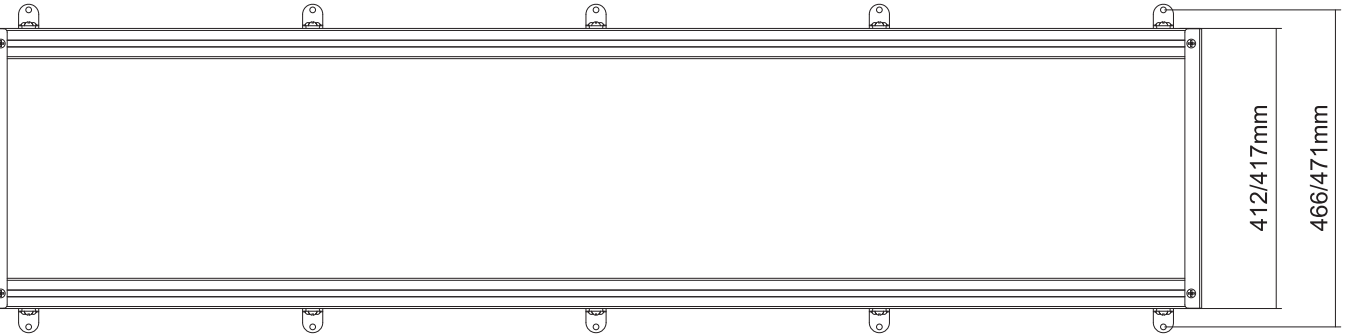


These parts are provided by the users.

2. Product Dimensions

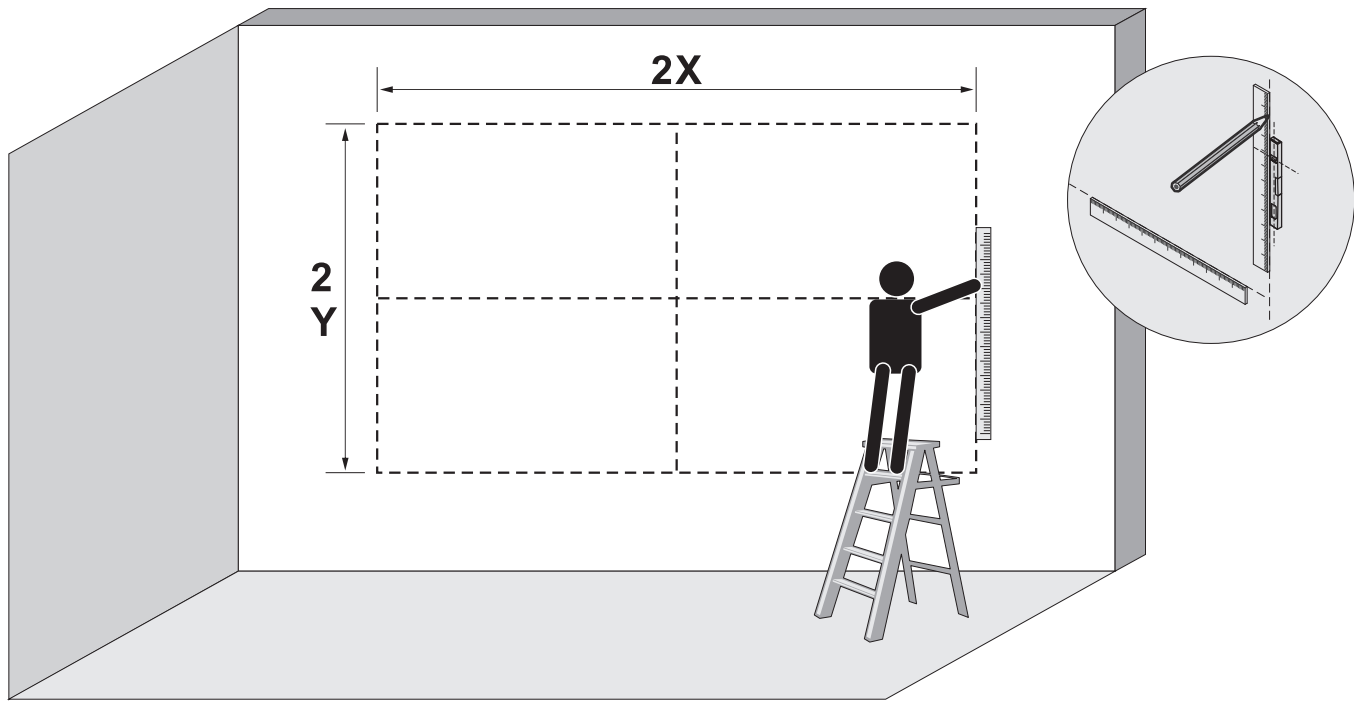
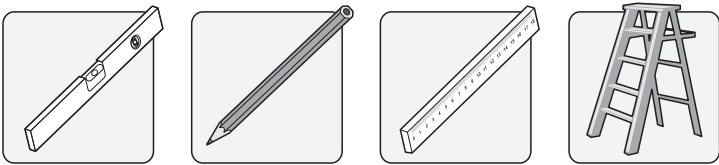


For 45x45 aluminium profile, the mounting profile is 106mm.
For 40x40 aluminium profile, the mounting profile is 103mm.

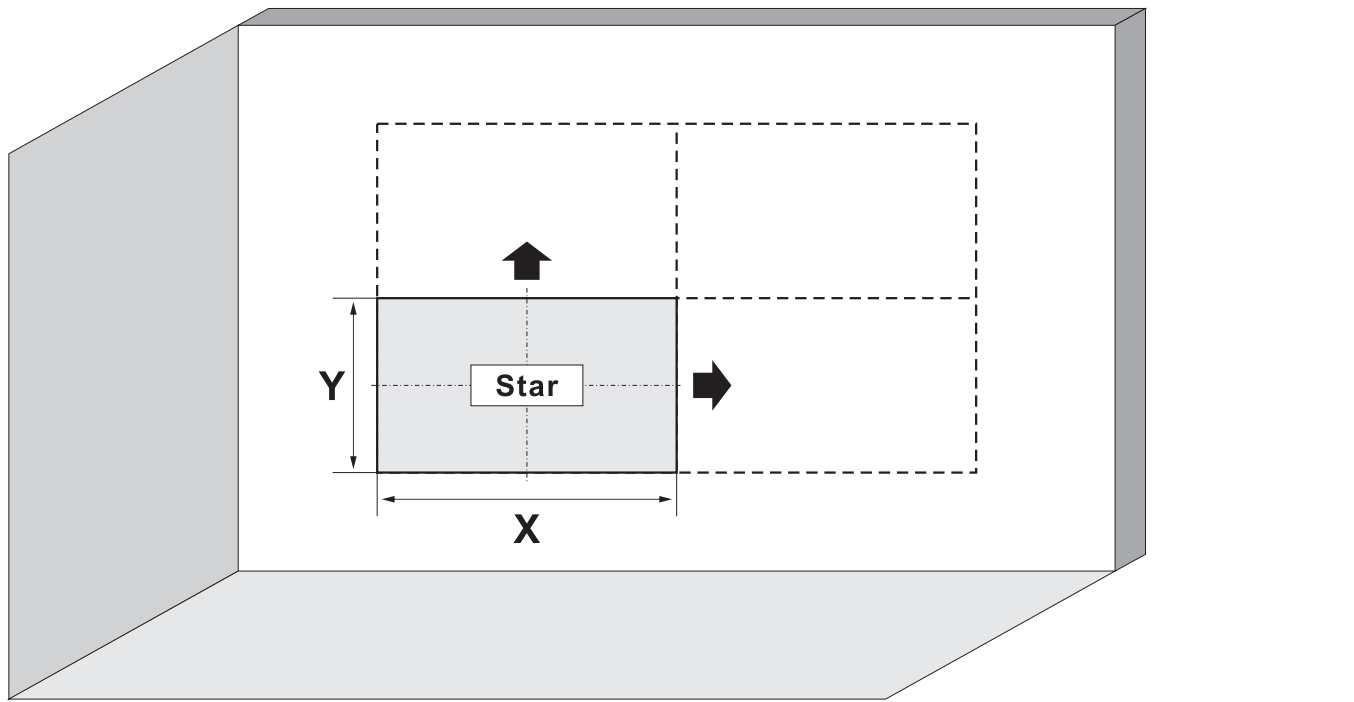


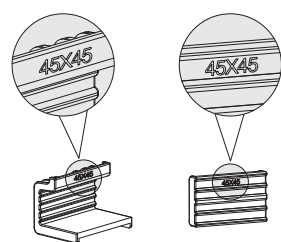
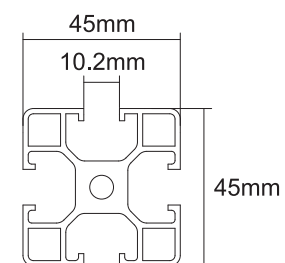
For 45x45 aluminium profile, the height between mounting holes is 471mm.
For 40x40 aluminium profile, the height between mounting holes is 466mm.

3. Video Wall Installation

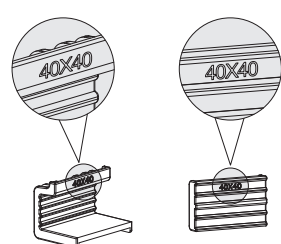
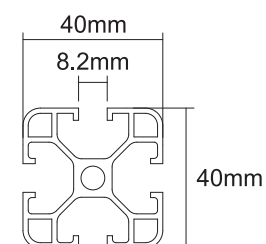


X=Length of display Y=Height of display

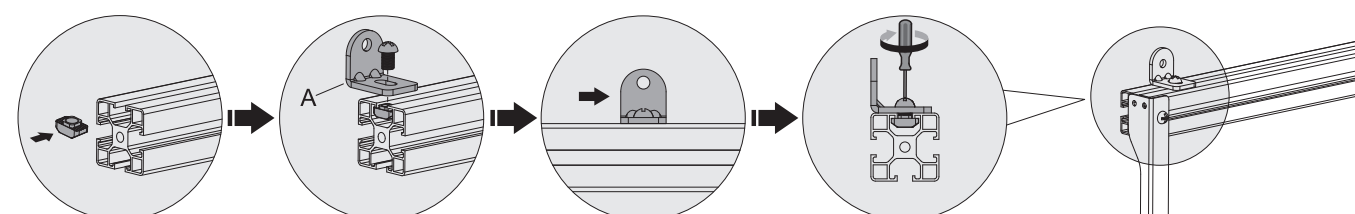
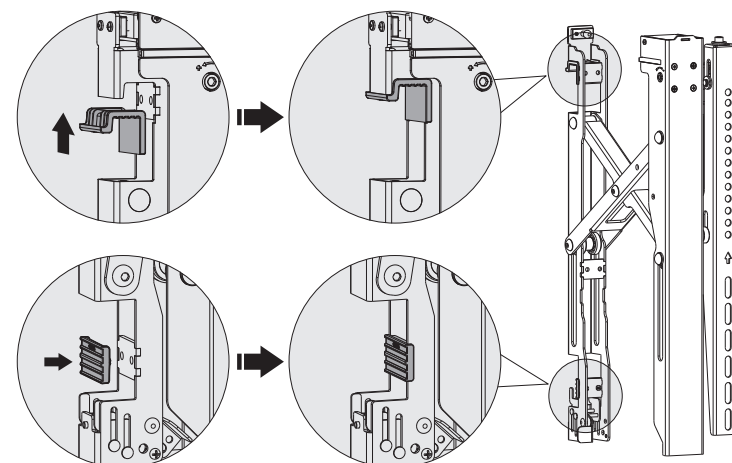




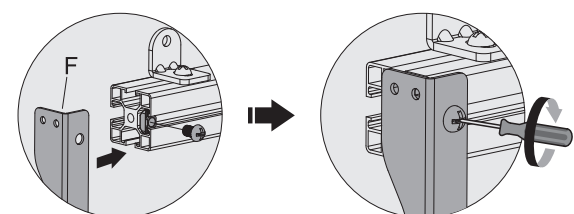
If the user selects the 45x45 aluminium profile, you can use the adapter brackets directly. The 45x45 protective components have been already installed on the adapter brackets at the factory.



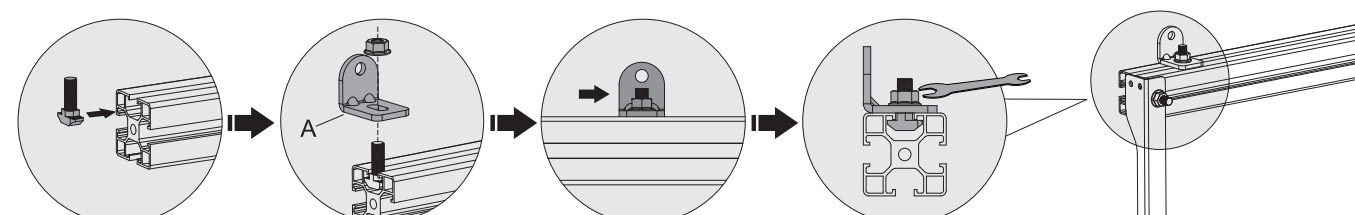
If the user selects the 40x40 aluminium profile, please remove 45x45 protective components and reinstalled 40x40 protective components on the adapter brackets.



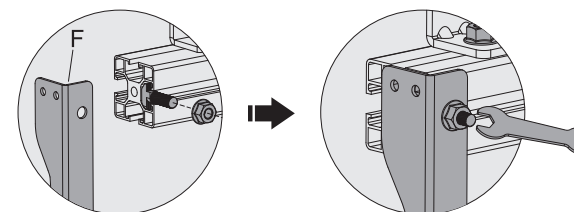
Insert the T-shaped or square nuts into the aluminium profile along the slots. Attach the L-shaped connecting plates to the nuts using the appropriate screws.



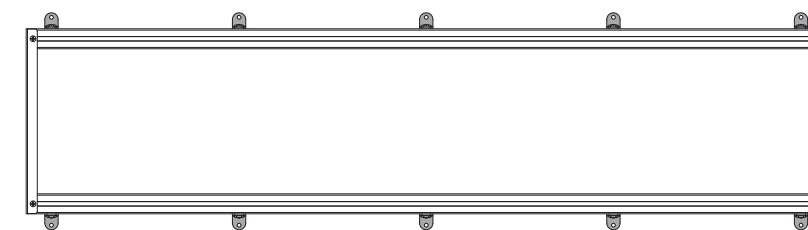
Attach the connecting plates to the aluminium profiles using the appropriate screws.



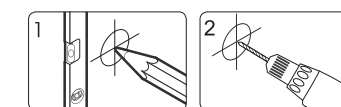
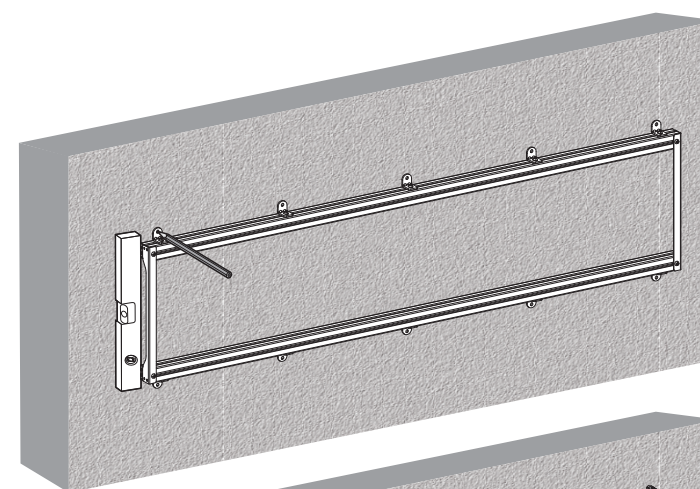
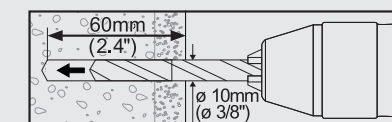
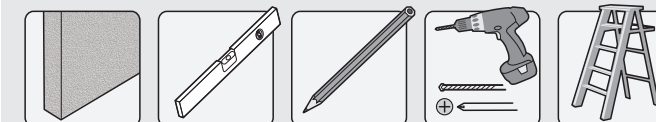
Insert the T-shaped bolts into the aluminium profile along the slots. Attach the L-shaped connecting plates to the T-shaped bolts using the appropriate flange nuts.



Attach the connecting plates to the aluminium profiles using the T-shaped bolts and flange nuts.

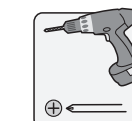
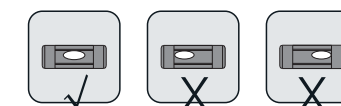


4. For Solid Brick and Concrete Wall Mounting

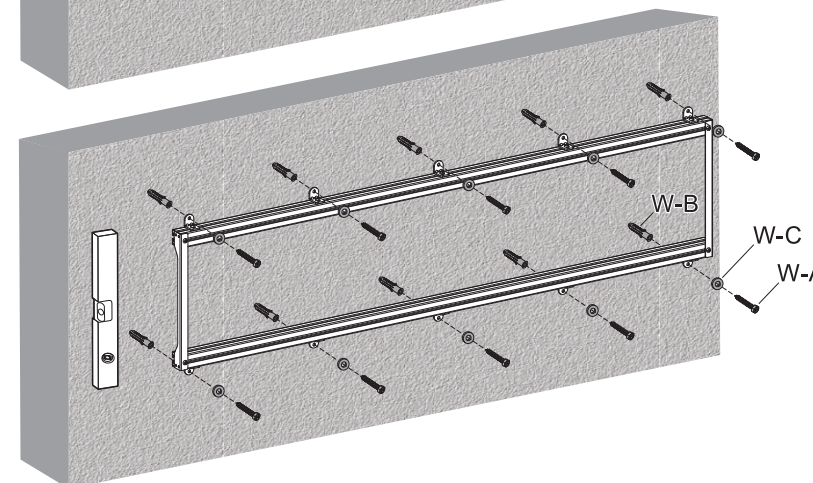


Mark the exact location of mounting holes

Drill pilot holes



Screw the wall plate onto the wall

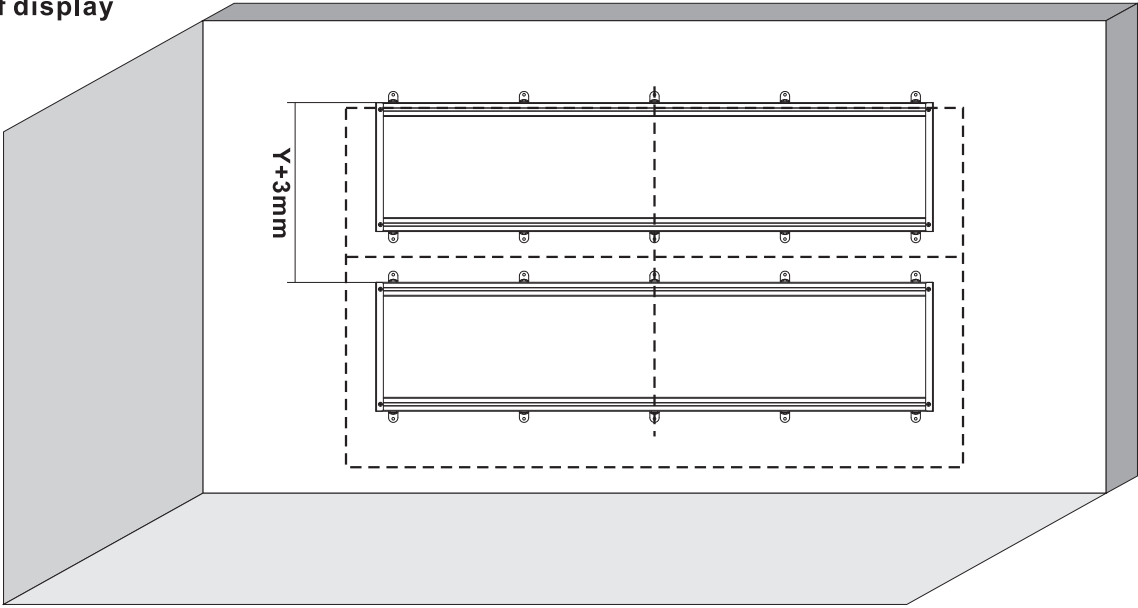


| W-A | | W-B | | 1:1 |
|-----|--|-----|--|-----|
| | | | | |
| W-C | | | | |
| | | | | |

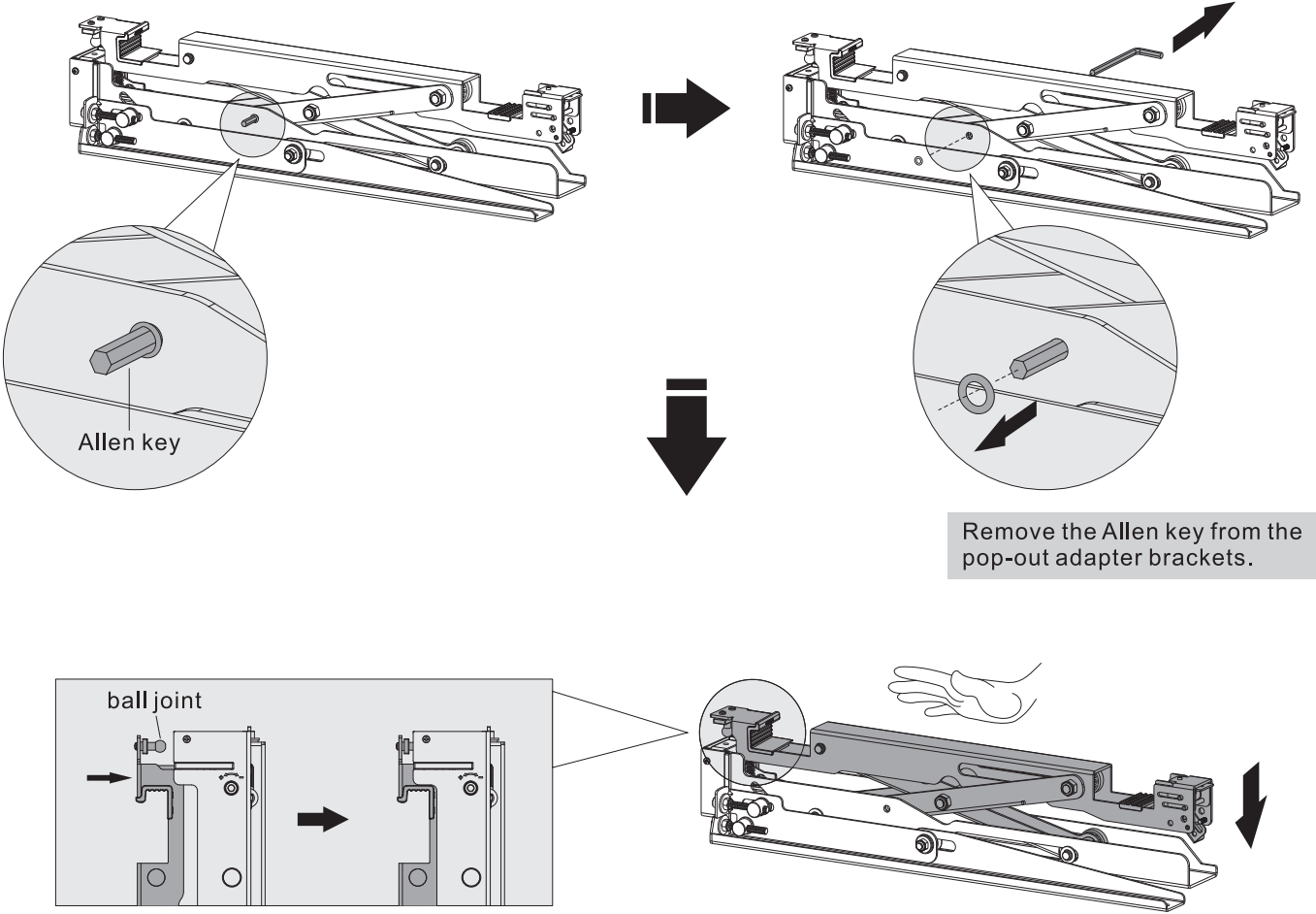
⚠ WARNING

Installers must verify that the supporting surface will safely support the combined weight of the equipment and all attached hardware and components.

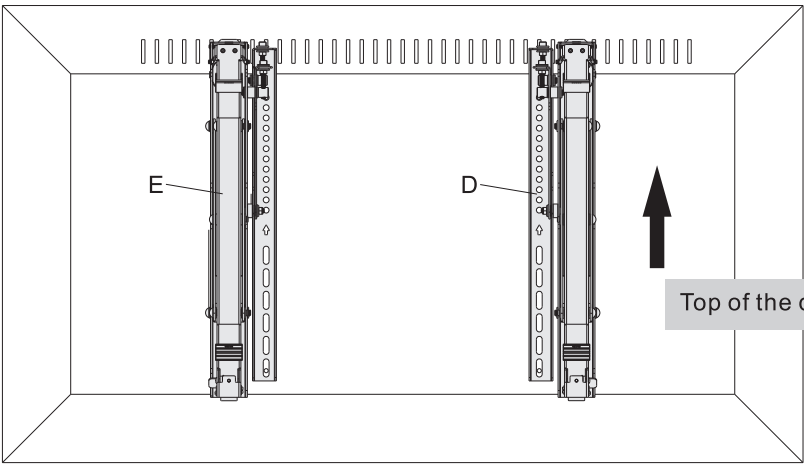
Y=Height of display



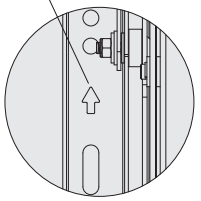
5. Installing the Pop-out Adapter Brackets



Push the pop-out arm until the ball joint snaps into place.

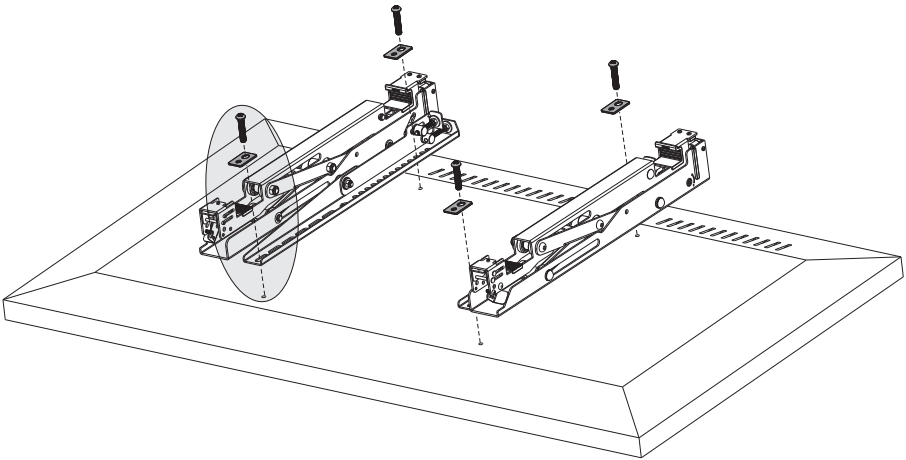
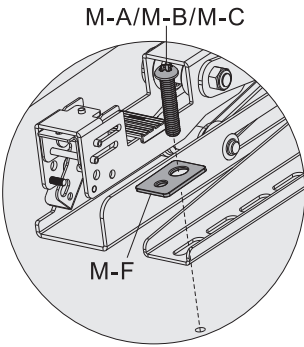
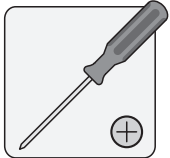
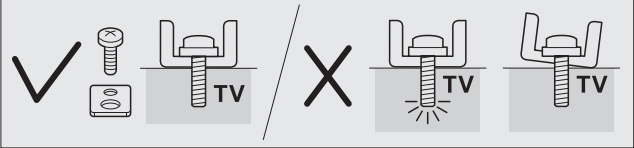


Note: With the arrow pointing up.



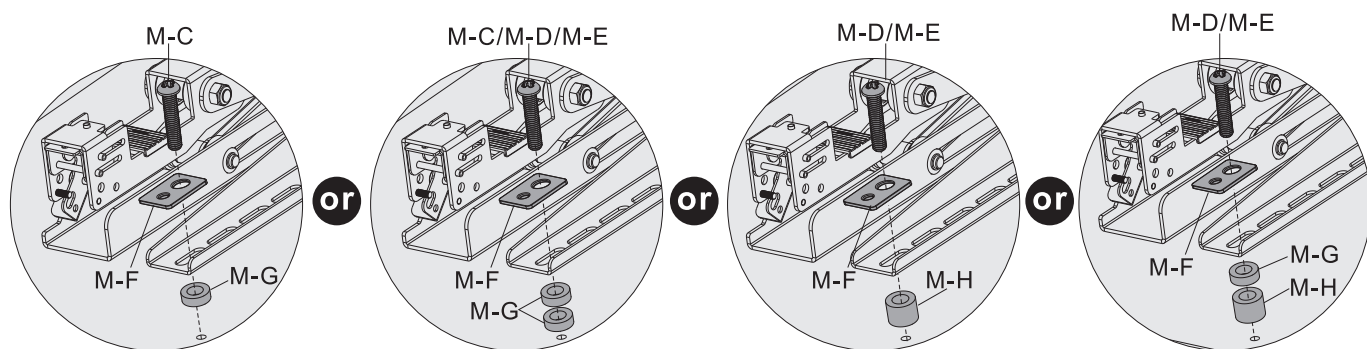
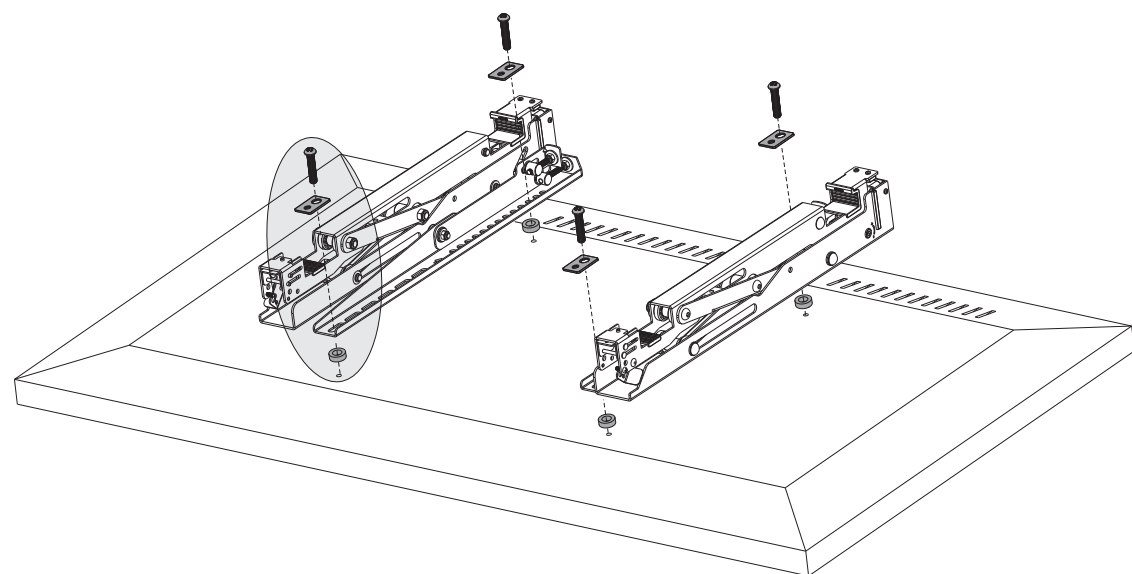
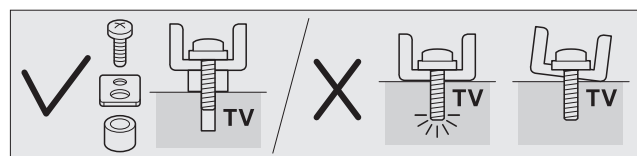
Top of the display

5-1 For Flat Back Screens



| 1:1 | | | |
|-----|--|--|-----|
| M-A | | | M-B |
| | | | M-C |
| | | | M-F |
| | | | |

5-2. For Bump-out or Recessed Back Screens



| M-C | | M-D | |
|-----|--|-----|--|
| | | | |
| M-E | | M-F | |
| | | | |
| M-G | | M-H | |
| | | | |

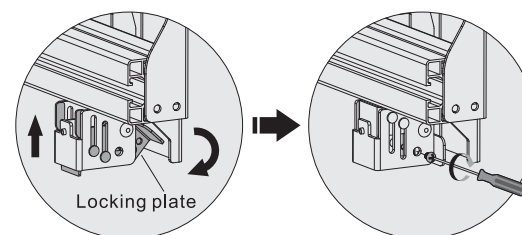
1:1

Note: Choose the appropriate screws, washers and spacers (if necessary) according to the type of screen.

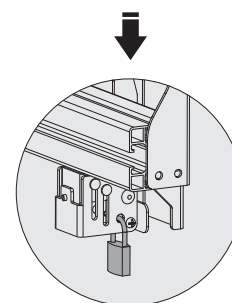
- Position the adapter brackets as close as possible to the center of the display.
- Screw the adapter brackets onto the display.

⚠ Tighten all screws but do not over tighten.

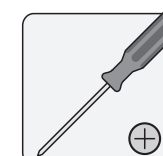
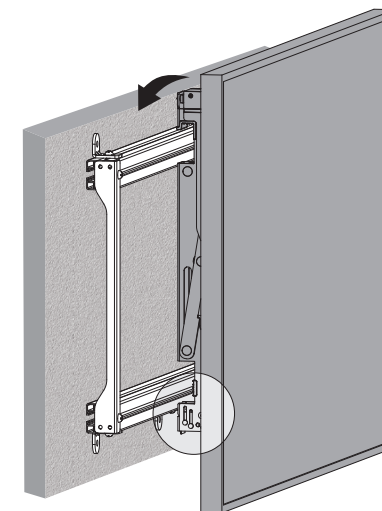
6. Hooking the Display onto the Wall Plate



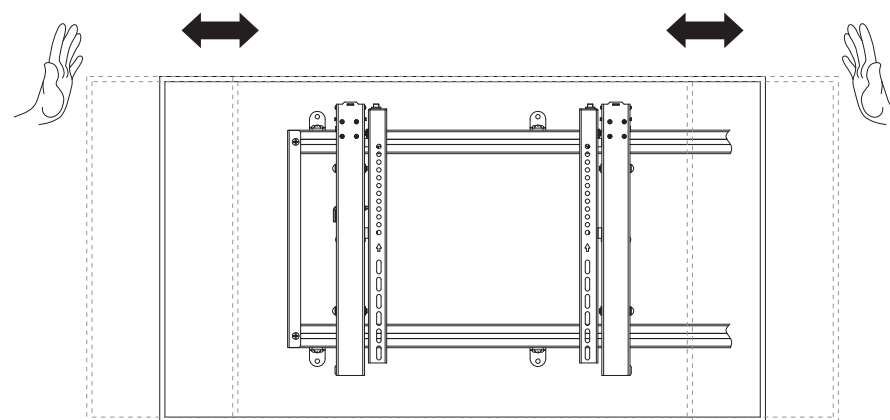
Turn the locking plates downward to fasten the wall plate and tighten the screws to secure.



Use a padlock to prevent the display from being stolen (The padlock is not included).

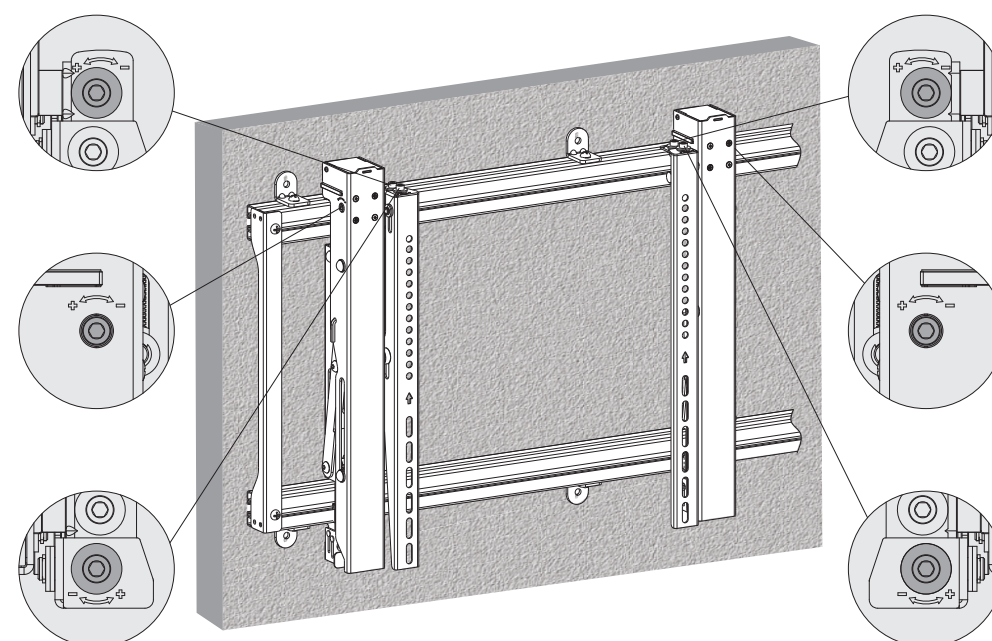


7. Adjustment



Push the display to left or right to enable fast alignment.

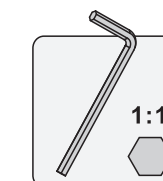
Micro Adjustment



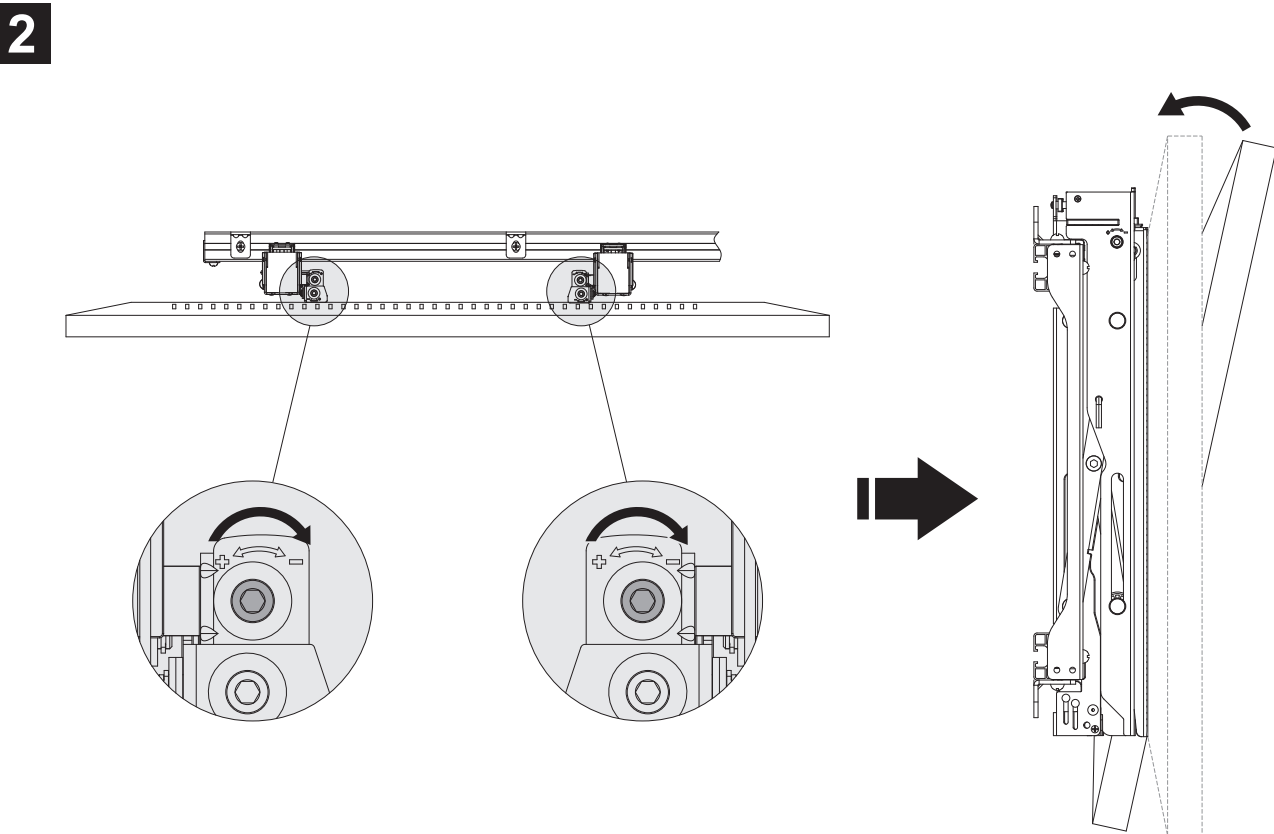
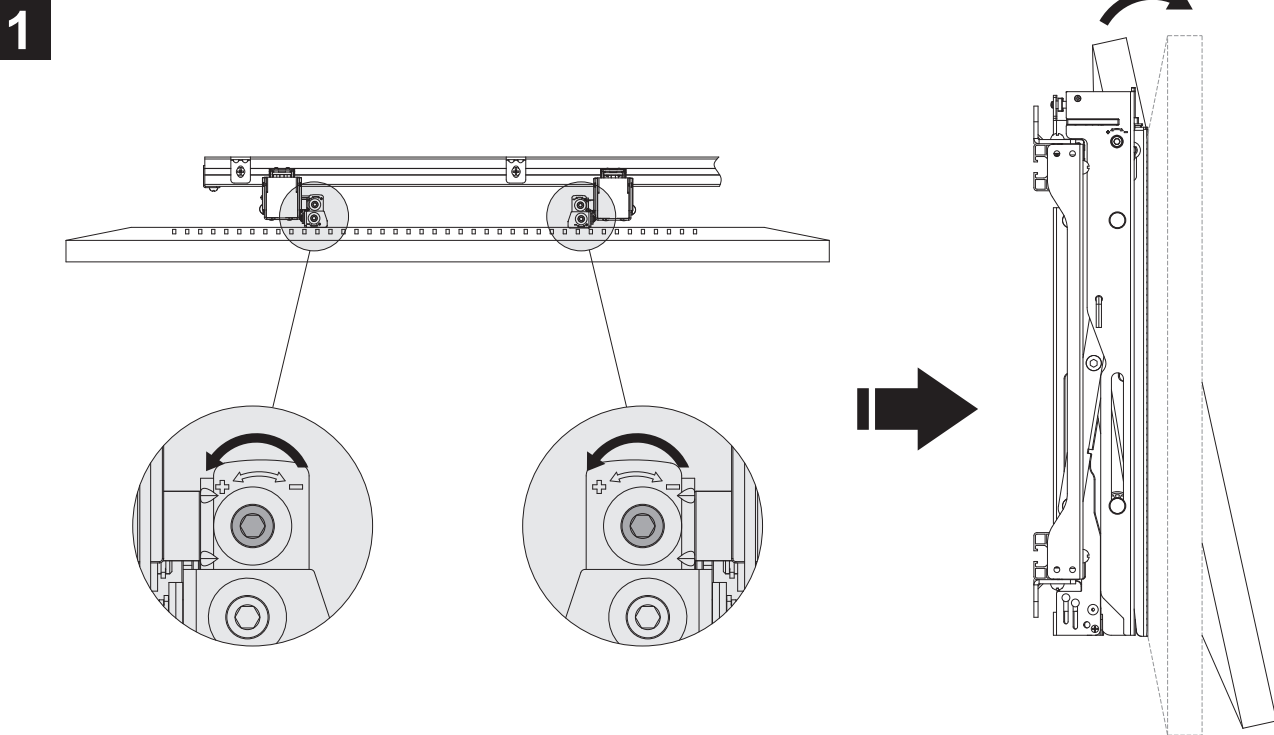
For tilt adjustment.

For micro-adjustment of in and out.

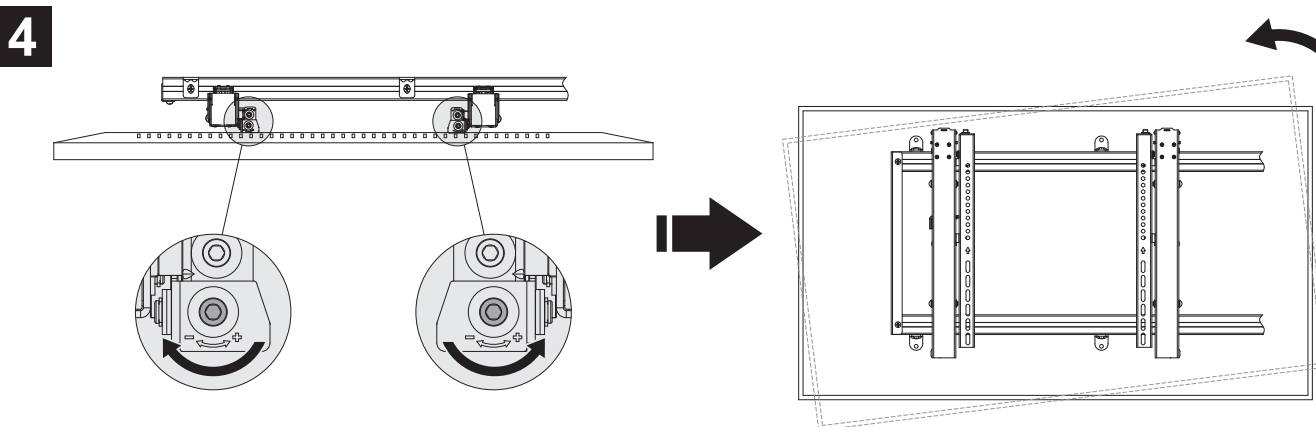
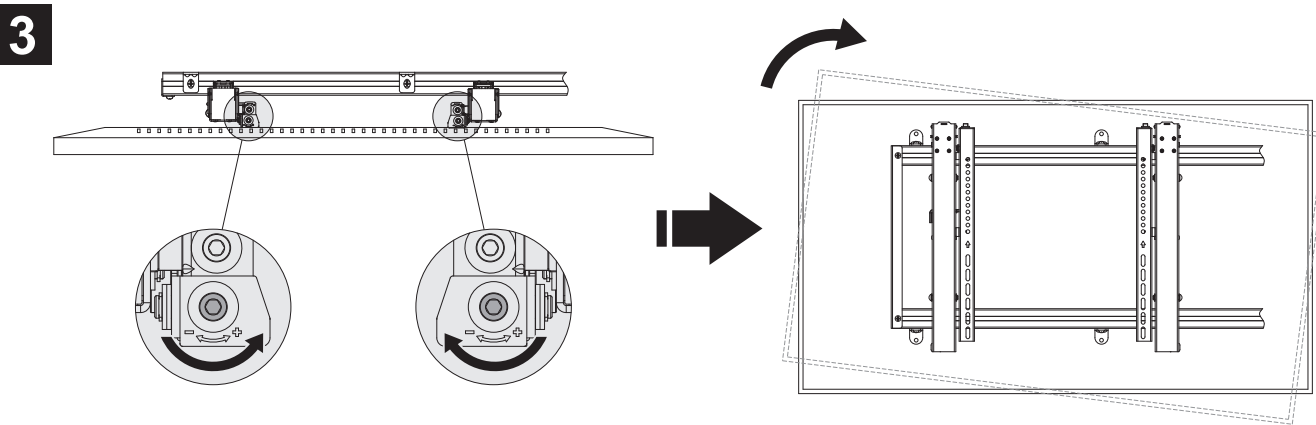
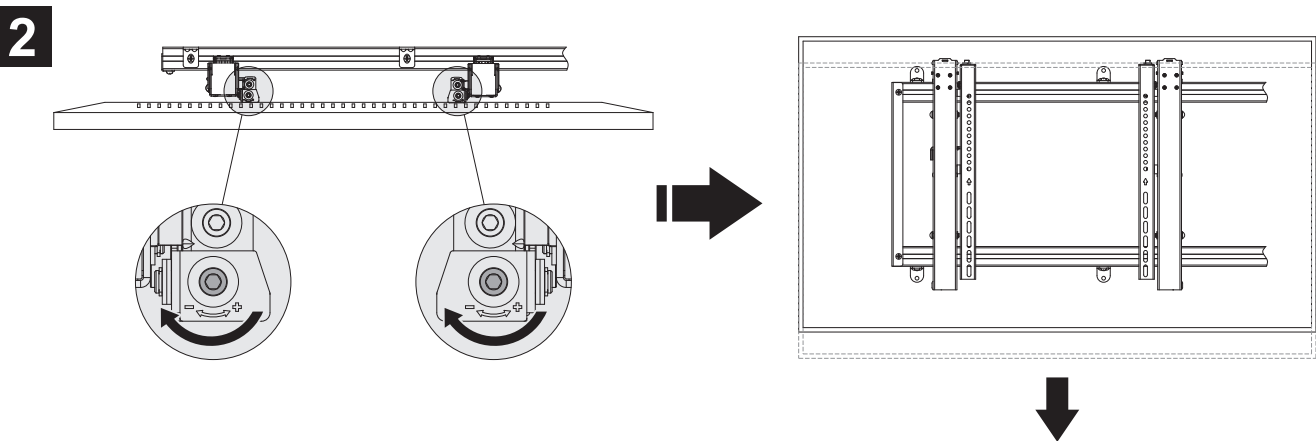
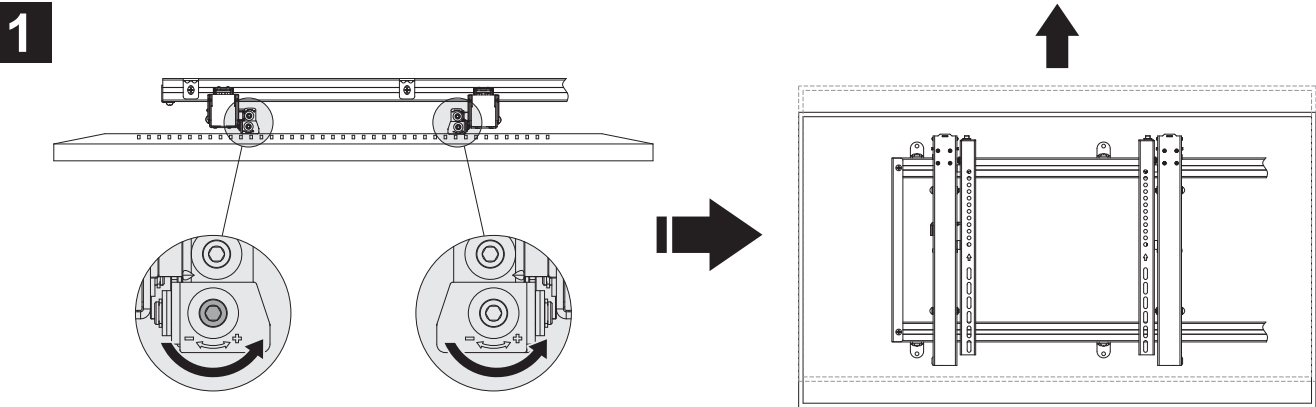
For micro-adjustment of up and down.



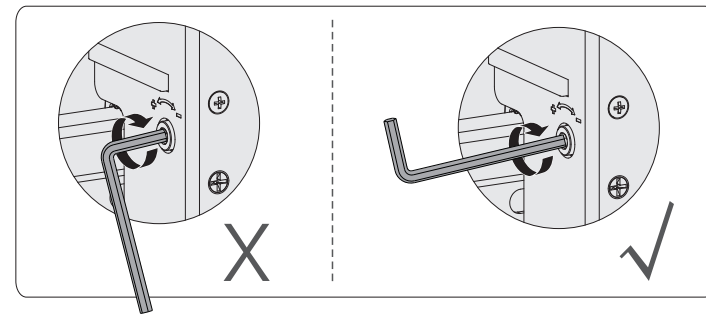
Tilt adjustment



Height adjustment



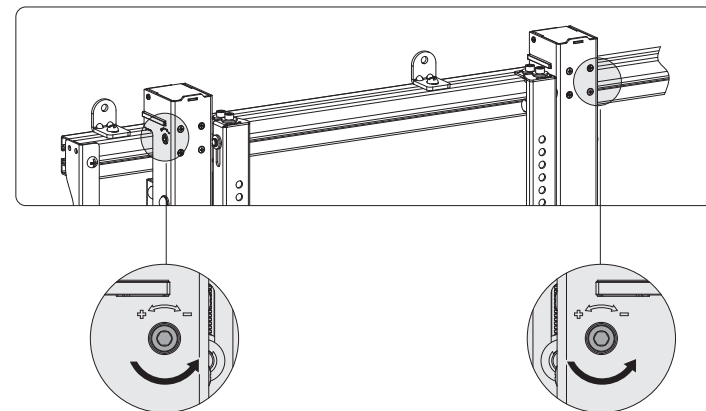
Depth adjustment



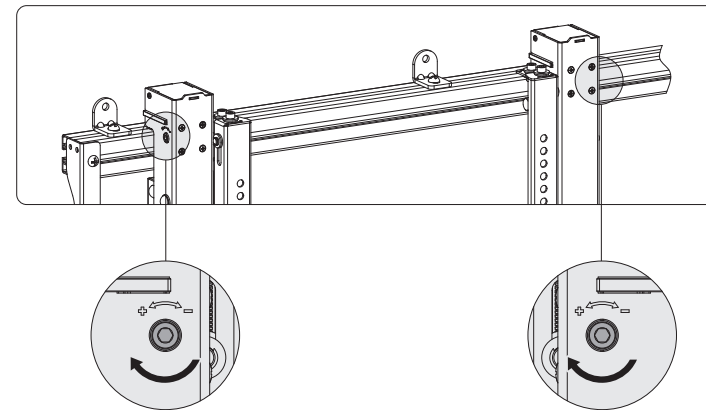
Note:

- Don't use the short end of Allen key to tighten the adjustment screw.
- Use the long end of Allen key to tighten the adjustment screw.

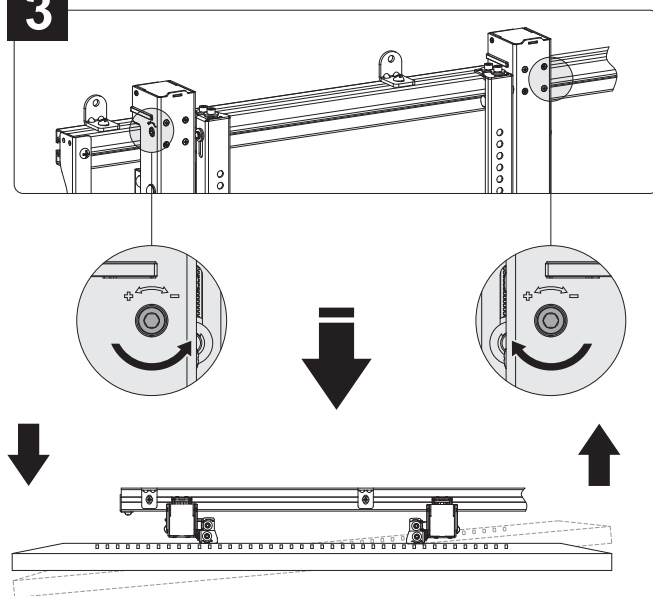
1



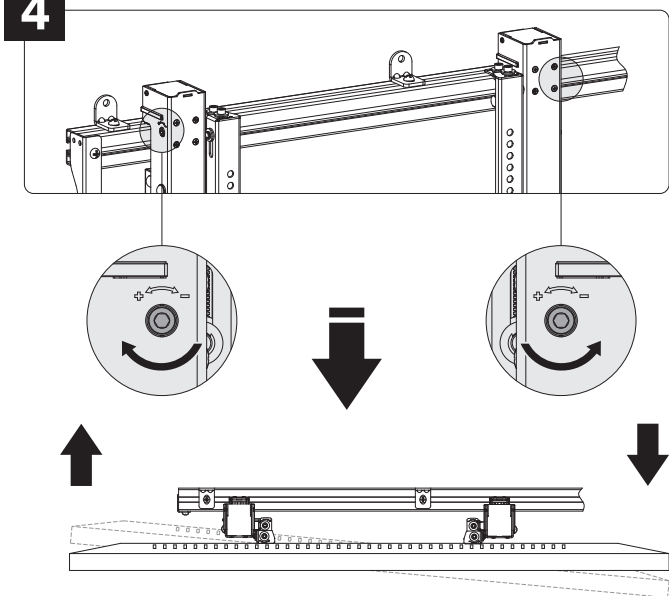
2



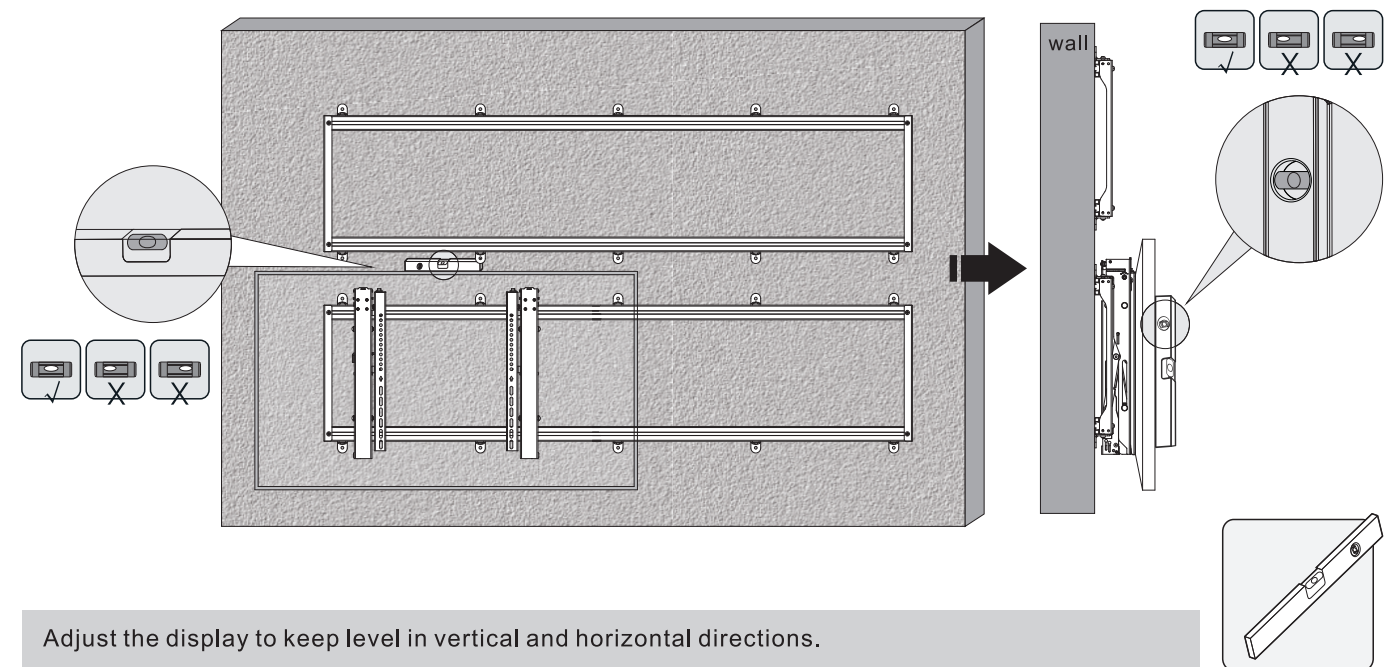
3



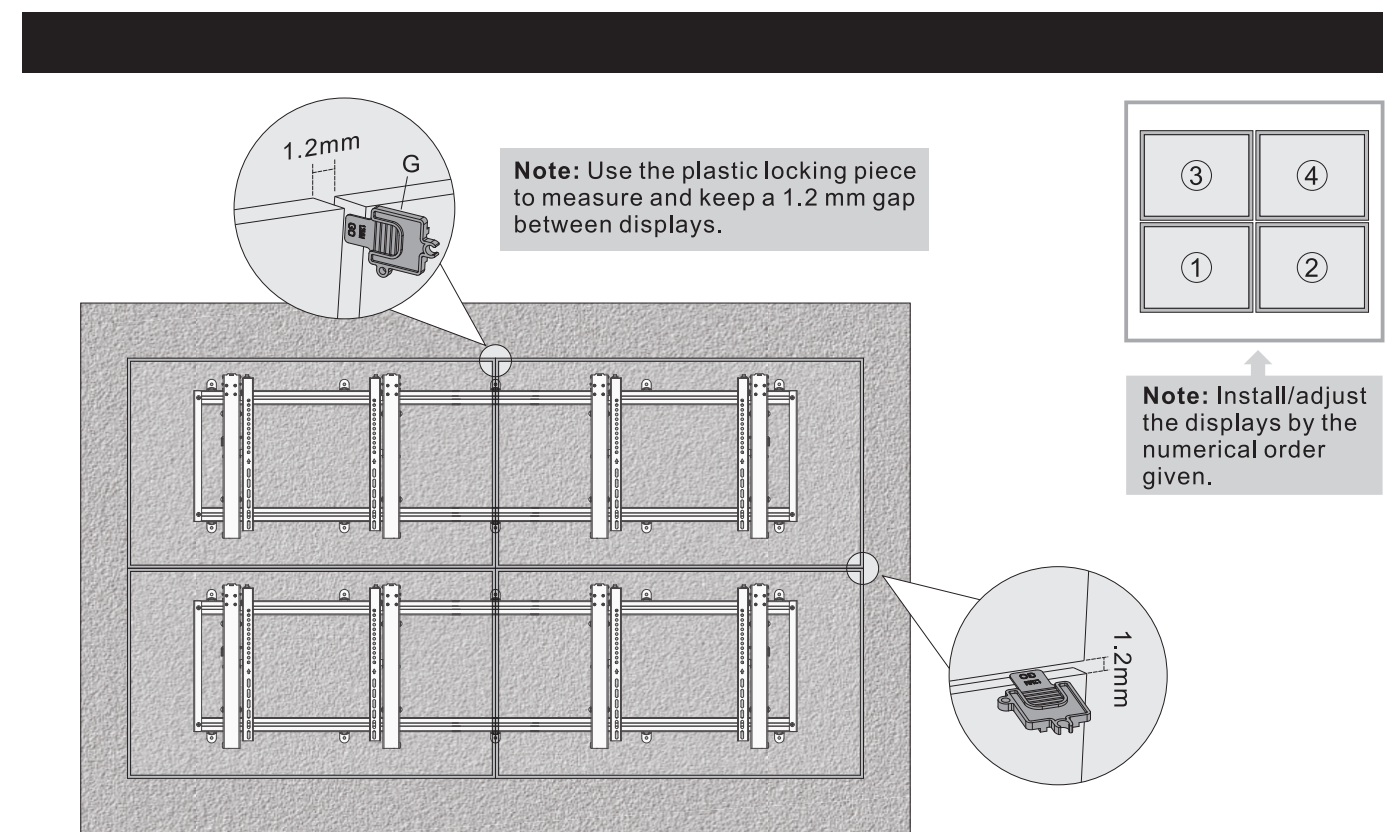
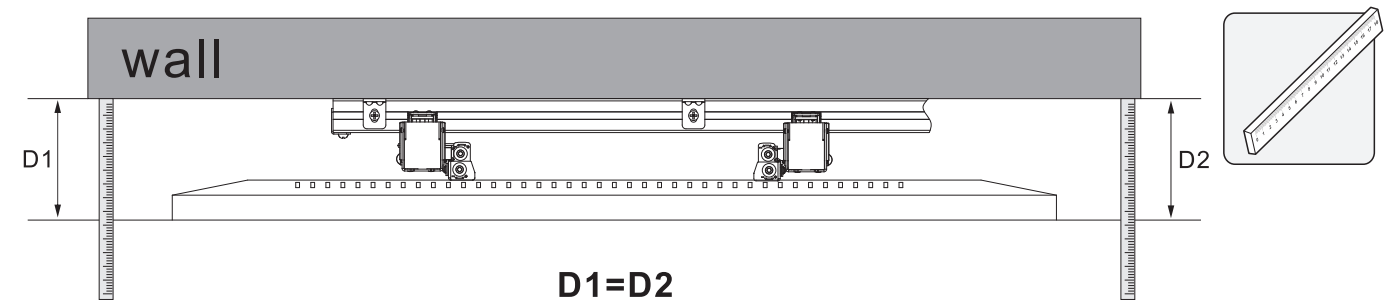
4



8. Level the Displays



Adjust the display to keep level in vertical and horizontal directions.



Note: Install/adjust the displays by the numerical order given.