

# MT-1600-CP



A (x1)



B (x1)



C (x1)



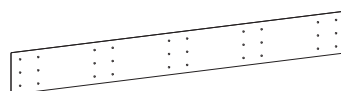
M8x80 (x2)  
D



E (x2)



M8x12 (x2)  
F

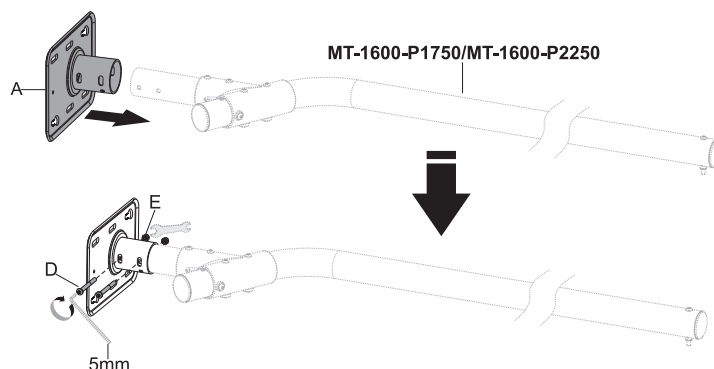


G (x1)

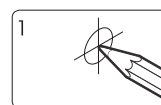
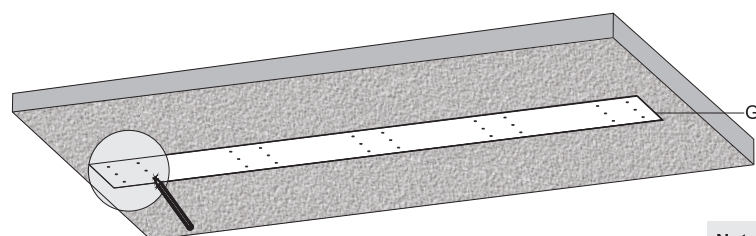
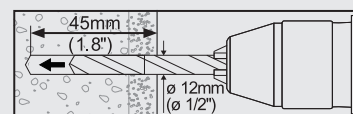
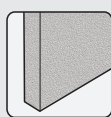


W-A (x6)

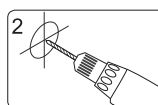
## Assemble the Pole



## Attach Ceiling Plate to the Concrete Ceiling

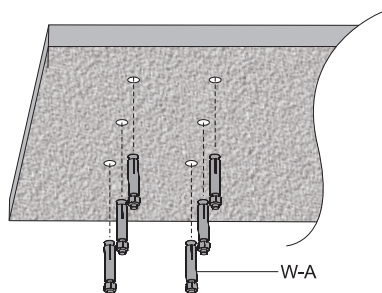


Mark the exact location of mounting holes

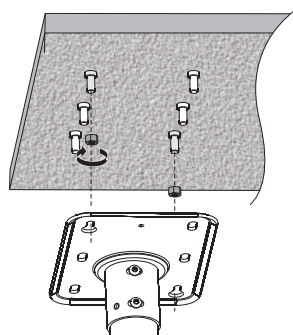
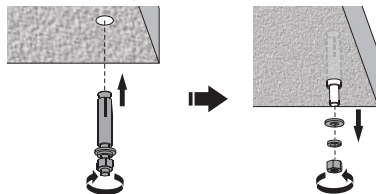


Drill pilot holes

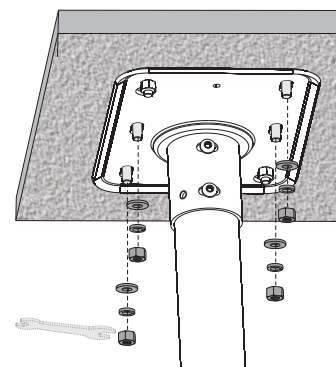
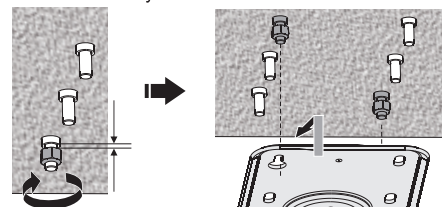
**Note:** Mark the mounting holes according to the exact product configurations.



Insert the expansion bolts into the hole as shown. Once inserted, remove the washers and hex nuts.



Attach the hex nuts to the expansion bolts corresponding to the keyhole pattern found on the ceiling plate. Do not overtighten and leave a small gap so the ceiling plate will slide into the keyhole slots.



For Weight-balanced Pole (MT-1600-P1750/MT-1600-P2250)

